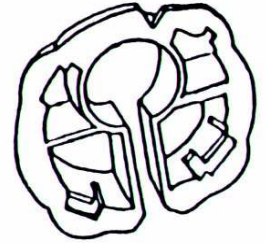


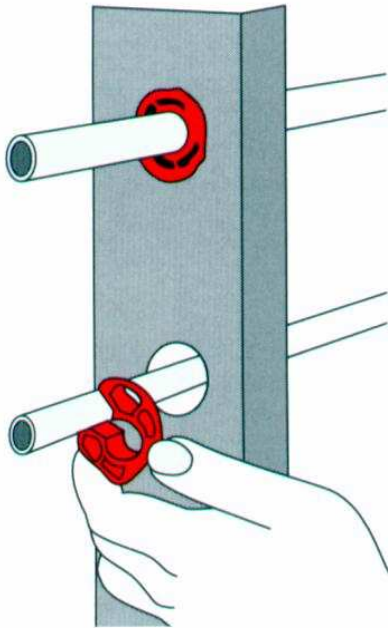
pipe-tytes[®]

INC.



Insulators for Metal Studs

Insulates copper or polypipe tubing from sharp metal edges.

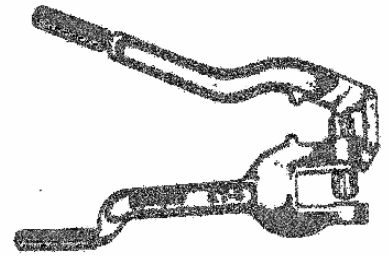


- Eliminates pipe rattle & electrolysis.
- Pipe-Tytes completely isolates the pipe from the metal stud.
- Fits 1/2" 3/4" & 1" copper tubing.
- Off-set hole makes for better pipe alignment.
- Made of tough, durable plastic. Withstands temps of 180°F.
- For use on all metal studs 18 gauge or lighter.
- Meets UL Standard 2043.

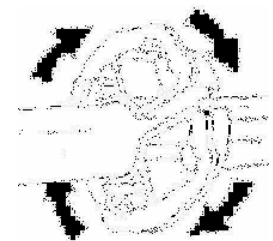
Free Literature & Samples

Installs in seconds for a neat professional job:

1. Punch hole in metal stud with the ET-5 Stud Punch.
2. Place PipeTyte over the pipe and push into the hole. Will not fall out or break. Secures the pipe to the stud either before or after soldering. This feature enables the plumber to fit many pipes together and maintain accurate pipe position before soldering.
3. The patented off-center hole allows you to rotate the PipeTyte in the hole to level or add pitch to the pipe. This enables the pipe to pass by stacks, or rotate back away from drywall screws or nails.

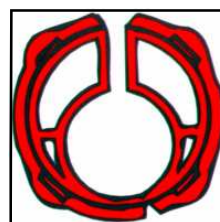


ET-5 Metal Stud Punch



Meets UL Standard 2043, "Fire Test for Heat and Visible Smoke Release for Discrete Products and Their Accessories Installed in Air-Handling Spaces." Please refer to www.ul.com for more information.

Mfg. by Pipe-Tytes, Inc.
9050 16th Street Vero Beach Florida 32966
Toll Free Phone: 800-325-8739
Toll Free Fax: 866-576-6200
Web: www.pipetytes.com



Tube Size	Part #
1/2" copper	500P
3/4" copper	750P
1" copper	1000P